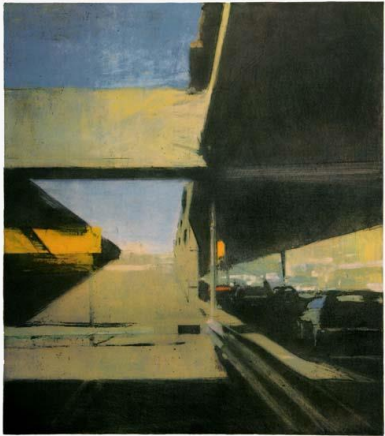


FOR IMMEDIATE RELEASE

For more information contact:

Jennifer Swanson
Communications Manager
Asheville Art Museum
(828) 253-3227, ext. 116
jswanson@ashevilleart.org



Art work image shown (available in high resolution):

Ben Aronson, *Closed Ramp*, 2010, oil on linen, 84 x 74 inches. Private Collection. Courtesy of the Georgia Museum of Art.

Cityscapes by Ben Aronson Brings Energy of Urban Life to Asheville Art Museum

Opening on November 2, 2013

Opening reception: Sunday, November 3, 2013 from 2:00 – 4:00 p.m.

ASHEVILLE, NC — [*Cityscapes*](#), an exhibition featuring works from artist Ben Aronson, **opens at the Asheville Art Museum on Saturday November 2, 2013**. The exhibition will be celebrated with an Opening Reception on Sunday, November 3 from 2:00 – 4:00 p.m. (free with membership or regular Museum admission). ***Cityscapes by Ben Aronson*** will remain on view through Sunday, March 9, 2014.

Perhaps best known today for depictions of men on Wall Street, American contemporary artist Ben Aronson also creates eloquently expressive cityscapes. This exhibition includes a mix of architectural and pedestrian scenes that capture the energy of rapid urban life in an elegant, painterly manner.

Aronson, an American figurative painter, captures fleeting moments and personal memories in his depictions of city life. His paintings feature interplay between light and dark colors, highlighting movement and energy in the compositions.

Aronson received his master of fine arts degree in painting from Boston University in 1982. He has received numerous awards throughout his career and has exhibited his works of art nationally and internationally. His expressive style was influenced by abstract artists in the Boston Expressionist School and Bay Area School such as Richard Diebenkorn, Willem de Kooning, Jack Levine, Franz Kline and his father, David Aronson.

This exhibition was previously organized by and exhibited at the Georgia Museum of Art.

Art work image shown (available in high resolution): Ben Aronson, *Closed Ramp*, 2010, oil on linen, 84 x 74 inches. Private Collection. Courtesy of the Georgia Museum of Art.

About the Asheville Art Museum:

Founded by artists in 1948 in Asheville, NC, the Asheville Art Museum annually presents an exciting, inviting and active schedule of exhibitions and public programs based on its permanent collection of 20th and 21st century American art. Any visit will also include experiences with works of significance to Western North Carolina's cultural heritage including Studio Craft, Black Mountain College and Cherokee artists. Special exhibitions feature renowned regional and national artists and explore issues of enduring interest. The Museum also offers a wide array of innovative, inspiring and entertaining educational programs for people of all ages.

Additional information for upcoming exhibitions and public programs at the Museum can be found online at www.ashevilleart.org.

Special thanks to [Bold Life](#), [Verve](#) and [Carolina Home & Garden](#) magazines, as well as [The Laurel of Asheville](#), for their support as a Media Sponsor of the Museum for the 2013 fiscal year. For more information about media sponsorships, please email Jennifer Swanson, Communications Manager, at jswanson@ashevilleart.org.

#

The Asheville Art Museum is the only nonprofit visual arts museum serving the 24 counties of Western North Carolina. Incorporated by artists in 1948, the Museum collects, preserves and interprets American art of the 20th and 21st centuries with a focus on work of significance to the Southeast.

Centrally located in downtown Asheville on Pack Square, the Museum is open 10:00 a.m. to 5:00 p.m., Tuesday through Saturday and 1:00 p.m. to 5:00 p.m. on Sunday. Special docent-guided tour packages are available for groups and students.

Admission to the Museum is \$8.00 for adults and \$7.00 for seniors (ages 60+) and students (K-college). Children age five and younger are admitted free. Members are admitted free to the Museum. The Museum's Shop, Holden Community Gallery (first floor, North Wing), Biltmore Gallery (adjacent to the main entrance) and Atrium art installations are open for the general public to enjoy free of charge.

The Asheville Art Museum is accredited by the American Association of Museums and receives general operating support from businesses, foundations and individuals, as well as from the North Carolina Arts Council, an agency funded by the State of North Carolina, and the National Endowment for the Arts, which believes that a great nation deserves great art. Additional support is provided by the City of Asheville and Buncombe County.

The Asheville Art Museum asks when reprinting images, please keep all artwork at their original proportions; please do not crop them or alter them disproportionately. Provided image credit information is mandatory and images are not for resale.