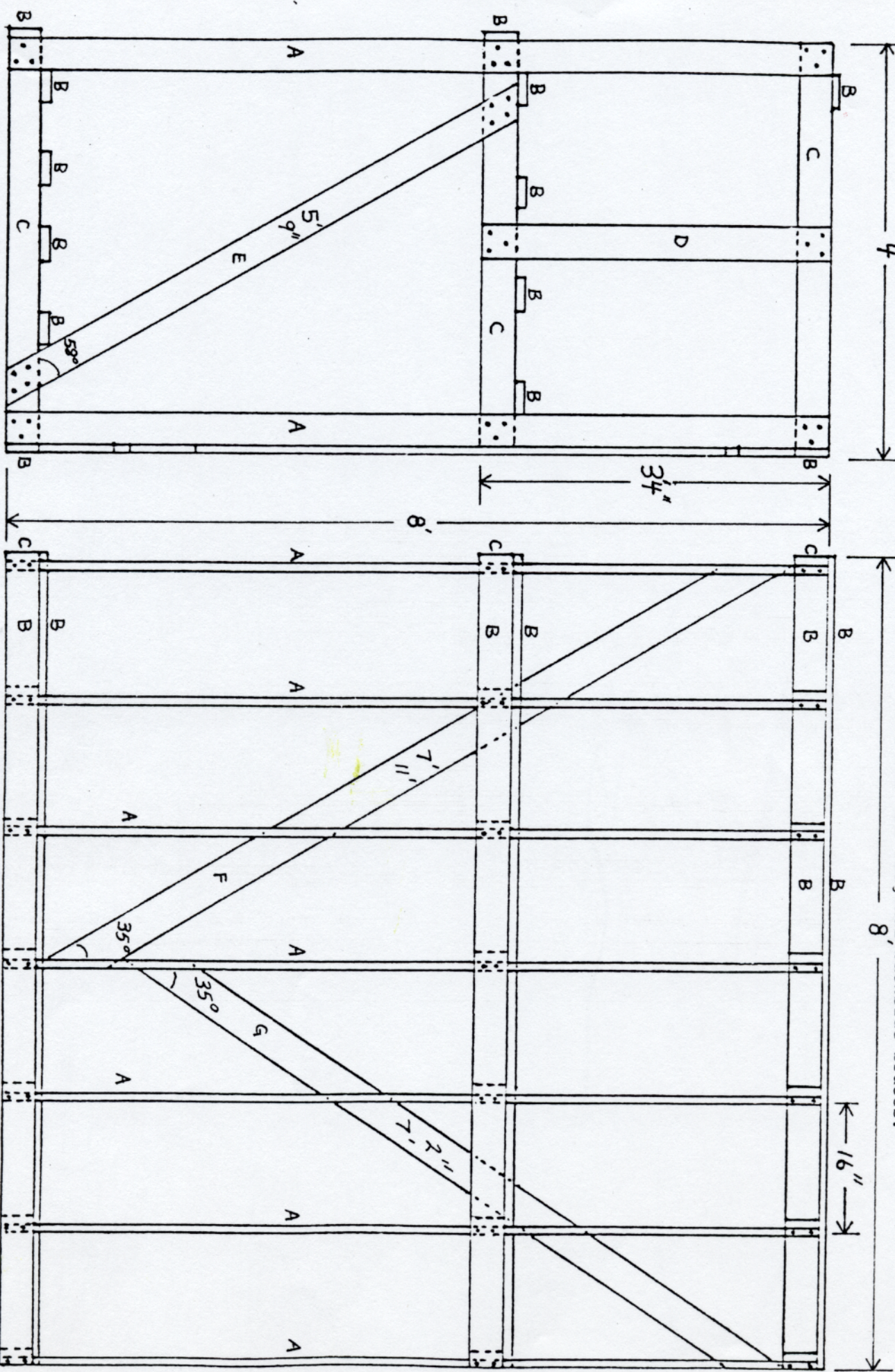


Buy 50 pieces of wood 1"x4"x8' and 436 4 penny coated nails. To assemble, save 27 8' pieces for (A) and (B) supports.
 Then cut:

- (C) 21 4' long pieces for the top, center, and bottom (Front to back) supports.
- (D) 7 3' 4" long pieces for the vertical center supports in the upper sections.
- (E) 7 5' 9" long pieces with 58° end cuts for the diagonal lower section braces.
- (F) 1 7' 11" and (G) 1 7' 2" pieces with 35° end cuts for the diagonal, backside braces.



Side view of one vertical section.
 Build these first then tie together
 with (B), (F), and (G) pieces.

Front view of assembled bin.

Drawn by Steve Wilcox, Conservation Technician